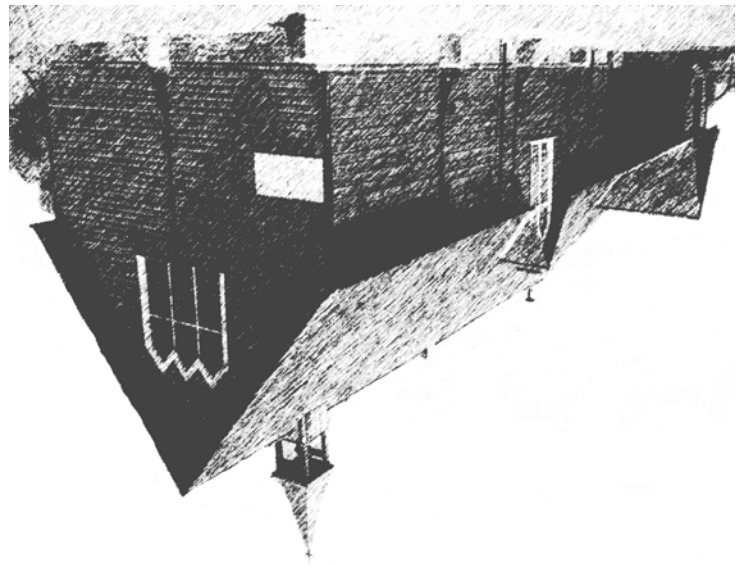


(c) Hurley Church (above) A small wooden structure, erected in about 1860 for a Dame School. The adjacent brick school was built in 1895 on the site of St Edmund's Chapel.

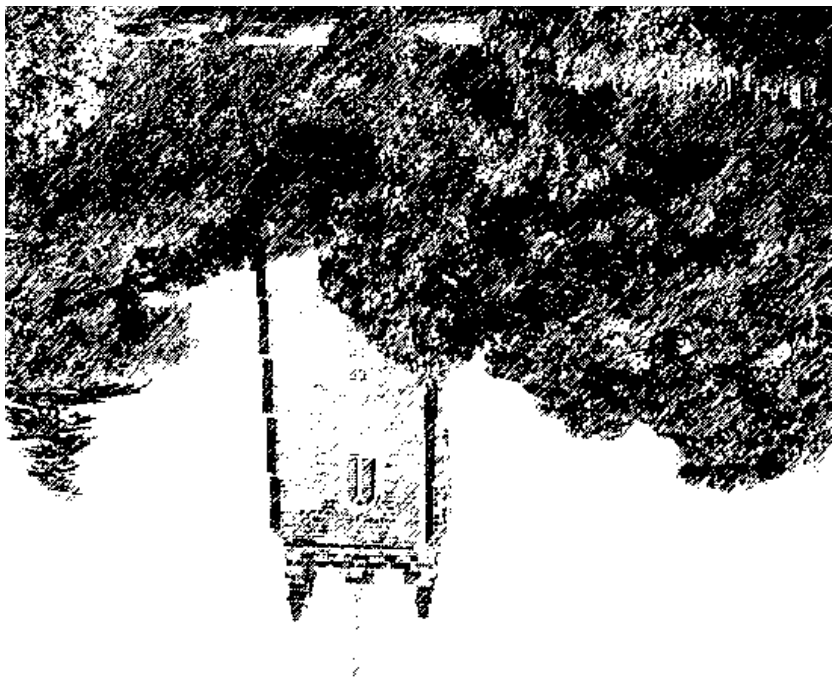


(B) "Planks": A raised footway, originally used when the River Tame flooded and children needed to get to school.

(A) Kingsbury Hall and Church: The Hall dates from Elizabethan times and was the home of the Brace-bridge family, who were the manorial lords. The Church still retains a Norman doorway and a heavily buttressed 14th Century tower.

Points Of Interest

- (D) **Atherstone House:** A late 17th Century building with stone quoins. It is said that during Cromwell's time a cannon ball went down the chimney.
- (E) **Hurley Hall:** An early Georgian moated building which once housed a magistrates court.
- (F) **Holly Bush Inn:** Overlooked the Bull Ring where the village stocks were sited.



Kingsbury Church from "The Planks"

LENGTH OF THE WALK

Longer than most circular walks, this route involves the negotiation of a large number of steps and stiles. It is clearly indicated with the waymark signs identified below, and can be tackled as two shorter walks should you wish reduce the length of your walk.

Main Route	:	8 1/4 miles (approx. 4 1/2 hours)
Water Park Route	:	2 1/2 miles (approx. 1 hour)
Hurley Route	:	5 3/4 miles (approx. 3 1/2 hours)

FURTHER INFORMATION:

For further information on other circular walks in North Warwickshire, Countryside Events & Activities, and Cycleways, please contact North Warwickshire Borough Council, Community Development Division, The Council House, South Street, Atherstone, CV9 1BG, telephone (01827) 719207. More information about activities and events in Northern Warwickshire can be obtained by visiting the Northern Warwickshire Information Centre, Kingsbury Water Park, Bodymoor Heath Lane, Sutton Coldfield, Telephone (01827) 872660.

If you find any problems on public footpaths, please contact Warwickshire County Council's Countryside Access Team on (01926) 410410.

For **HAPPY** walking follow the country code

- Enjoy the countryside and respect its life and work*
- Keep all dogs under control*
- Keep to public paths across farmland*
- Fasten all gates*
- Guard against the risk of fire*
- Use gates and stiles to cross fences, hedges and walls*
- Leave livestock, crops and machinery alone*
- Help to keep all water clean*
- Take your litter home*
- Protect wildlife, plants and trees*
- Make no unnecessary noise*
- Take special care on country roads*
- Follow the waymarkers which indicate the route of the walk*
- Wear strong water-proof footwear*



KINGSBURY WALK



A delightful mix of lakes, open farmland and woodland. This walk links the two villages of Kingsbury and Hurley, and will provide a rewarding experience for all who tread its path.



North Warwickshire
Borough Council

Kingsbury Walk

Main Route ▲

From Kingsbury Water Park's Visitor Centre take the path signposted 'Far Leys' and then the grass track marked 'Broomey Croft'. Cross over the bridge and follow the white waymarkers indicating a permissive route. This path takes you along the "Woodland Walk" until you reach a junction. Turn right, then right again, moving away from the M42 motorway. Upon reaching the Far Leys car park follow the grass path alongside the adventure playground. Follow the path until you reach a lake and turn left towards a metal bridge. Cross the River Tame via the footbridge and proceed until you reach several flights of steps up to Kingsbury Church. Kingsbury Hall is to your left (A).

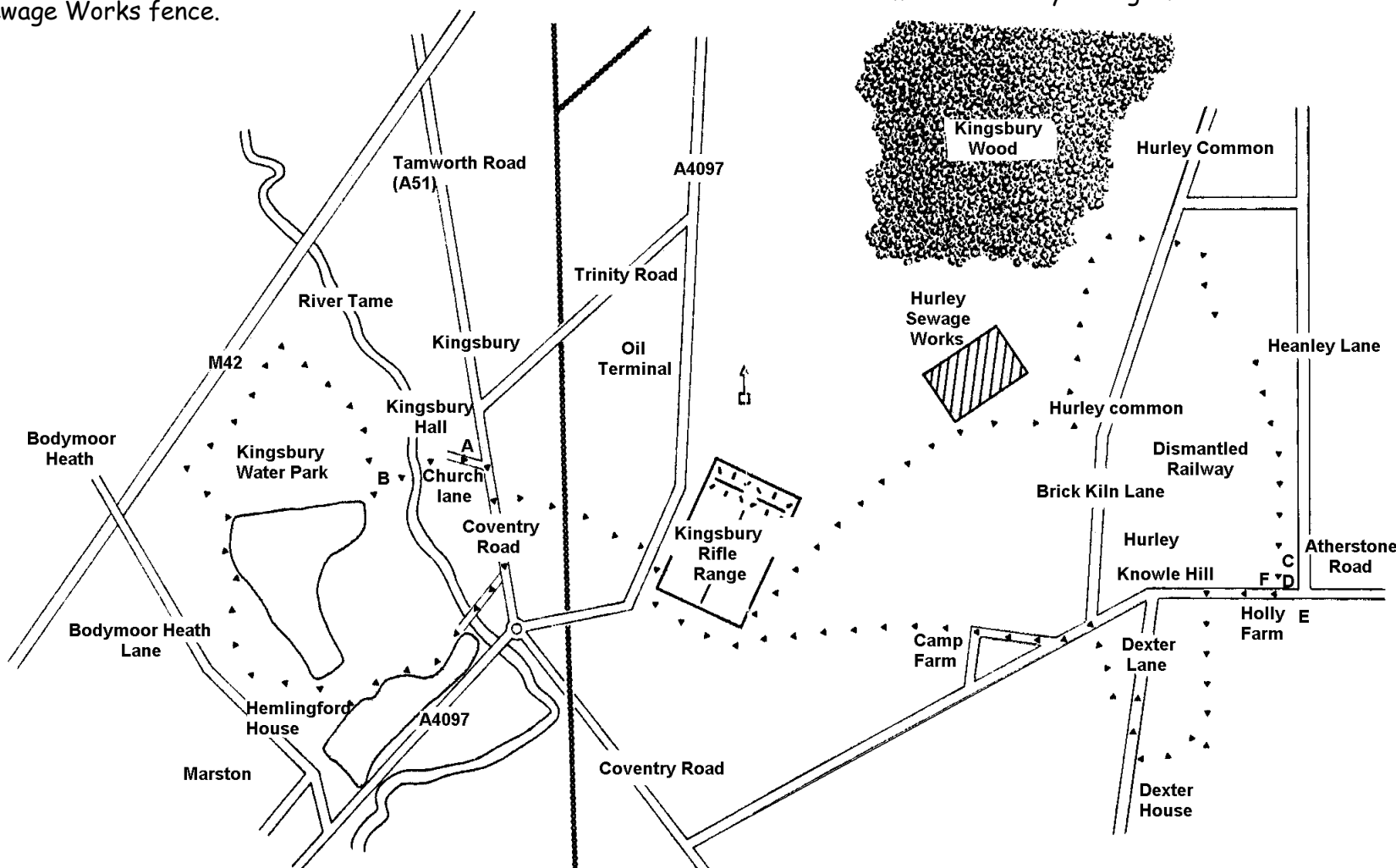
Walk through the churchyard and up to the busy Coventry Road(#). Turn right and head down the hill for 50 yards until you reach Kingsbury Linear Park on your left. Enter the Park and follow the grass track for 20 yards until it forks to the right. Proceed along this right fork, over a metal bridge, and continue to follow the grass track towards the top right hand corner of the Park. Cross over the stile and climb the set of steep steps up the railway embankment. Take extreme care crossing the railway line, as it is frequently used by high speed trains. Steep steps take you down the far embankment. Cross the stile and follow the path along the left hand side of the field. Proceed for 200 yards until you reach the busy main road. Take care when crossing to the other side. Continue along the well-worn path towards Kingsbury Rifle Range. Turn right and walk around the perimeter of the Rifle Range and then left into the field, with its good headland path. Proceed along the path until you reach the far end of the Range. At this point head across the field, taking a line towards the large tree and then beyond to the Hurley Sewage Works. Cross into a second field and head towards the far right hand corner of the Sewage Works fence.

Turn left and go under the tramline bridge. Proceed along the headland path (diagonally crossing the bottom corner of the field) for 200 yards and cross the ditch and stile. Continue through the next field keeping the hedge on your right until you reach the corner, cross the stile and walk through the next field with the hedgerow to your right. Cross over the stile and walk up the hill along the line of the fence. Proceed for a further 100 yards over a stile and along the right hand side of the field, towards Hurley School. At the break in the fence cross over the stile. After 50 yards the path turns to the right. Cross over the stile on your left. Take the narrow path alongside the School playing field and down the main road, Knowle Hill. Turn right, continue down the hill and round the bend in the road. Just before you reach Bridge Street, cross the road and take the gap in the fence on the left hand side. Cross over the stile. Proceed straight across the field, over the stile and across a second field and stile. Cross the third field, heading for a gap in the hedge and cross a fourth stile. Just opposite are two stiles in close succession, after crossing the second, turn right, keeping the hedge on your right. Enter the garden of Blythe Cottage and walk along the gravel road to Dexter Lane. Turn right and proceed until you reach a break in the hedge on the left hand side of the road. Cross over the stile and follow the well worn-path for 100 yards until you reach a style through the hedgerow on your right.

Cross over the stile and walk across the field, heading for the stile halfway along the opposite hedge. Cross the stile opposite the Post Office, turn left, cross the road and proceed out of Hurley, before taking the minor road on your right.

After 200 yards the road turns to the left. You should proceed straight ahead, through the green gate and across the field towards Kingsbury Church in the distance.

Walk across the field for 800 yards until you reach the boundary of the Rifle Range, taking in the view of Kingsbury Wood on your right, with Kingsbury straight ahead and Birmingham to your left. You are now back on the path you walked earlier.



Upon reaching the Works take the concrete road towards the white house, just before which turn you left along and down a steep bank. Turn left and take the bridge over the stream. Follow the line of the hedge until you reach the gap with a stile. Cross the stile and walk with the hedge on your left. Proceed up the hill, over the stile and continue straight ahead, alongside the hedge. After 100 yards, cross a stile and continue along the other side of the hedge.

After 50 yards you reach the bottom corner of the field. Cross over the stile and ditch and follow the well-worn path over a further stile and out on to Brick Kiln Lane at Hurley Common. Cross the road and, just to the right, follow the gated track for 40 yards before crossing a further the stile and entering the field. Walk along the left hand side of the field for 50 yards and after crossing another stile, turn right and proceed along a path by the side of a ditch, cross the next stile and enter the field. Turn left, and follow the well-worn path for 800 yards to the top corner of the field. Turn right and follow the path for 10 yards, then turn left and cross the stile and brook. Turn left across to the bottom corner of the field, then right along the edge of the field, keeping the old tramline to your left.

Follow the path around the perimeter of the Range and back over the busy road to the railway track, crossing the line through the new tunnel.

Proceed through the Park and over the metal bridge before reaching Coventry Road(#). Turn left and walk for 200 yards until you reach the Old Kingsbury Road, which takes you into Kingsbury Water Park. Cross the bridge and turn right just after the concrete bollards and onto the grass track. Continue until you reach a gap in the trees, turn right and follow the road until you reach the track signposted for the Nature Trail. Continue along the track, over a wooden bridge and out onto the road. Follow the signs back to the Visitor Centre.

WATER PARK ROUTE

When you reach Coventry Road, marked (#) in the description of the complete route, turn right and proceed for 250 yards until you reach the Old Kingsbury Road, again marked (#), and then continue along the description of the complete route.