

Abbey Green Park car park. Until you reach the main road; turn left and cross the road to reach reach the houses on your right and the canal on your left. Continue short distance, cross straight over another driveway, and through the immediate right. Go through the gap in the bushes ahead. After a following the waymarkers, the path runs parallel with a fence on your the War Memorial, the path leaves the road at a driveway on the left. eventually passed Polesworth War Memorial. Continuing down the road around a barrier, passed some old buildings on your right (K) and over the bridge, over a stile, and then under the motorway. Follow the soon meets the canal again. Follow the path above the canal and cross with the spoil heap away on your left. Continue along the track, which After about 500 metres, the path opens out. Keep straight ahead, this old miner's path through the trees, with pools on either side (J). Take the track between the canal and railway bridge (I) and follow your steps back over the canal bridge.

A short diversion takes you to Alvecote Priory and Dovecote (H). Cross over the canal bridge, turn left down the path, and the Priory and Dovecote are ahead of you. To return to the main route, retrace your steps back over the canal bridge.

Retrace your steps, cross the road and walk to the right of the Wolfenstan Arms, parallel with Milner Drive. At the end of Milner Drive, head to the left of a block of garages. Cross over two stiles into a field and turn left heading downhill to the stream. Cross the bridge and head diagonally right towards the gate and the traffic lights. Cross the river bridge on the left and head along the road for 500 metres. Turn left and follow the road through Alvecote village. After leaving the village, turn right over a railway bridge.

POLESWORTH WALK

LENGTH OF THE WALK

This walk is suitable for all the family. It is clearly indicated with the waymark signs identified below, predominantly across flat countryside. It provides an interesting contrast of architectural splendour, coal mining heritage and beautiful rural scenery.

Total Walk 6 Miles (approx. 3 hours)



STARTING POINT

The walk starts from the Abbey Green Park car park, off Grendon Road, Polesworth. Please park carefully as you will be away for some time.

FURTHER INFORMATION

For further information on other circular walks in North Warwickshire, Countryside Events & Activities, and Cycleways, please contact North Warwickshire Borough Council, Community Development Division, The Council House, South Street, Atherstone, CV9 1BG, telephone (01827) 719207. More information about activities and events in Northern Warwickshire can be obtained by visiting the Northern Warwickshire Information Centre, Kingsbury Water Park, Bodymoor Heath Lane, Sutton Coldfield, Telephone (01827) 872660.

If you find any problems on public footpaths, please contact Warwickshire County Council's Countryside Access Team on (01926) 410410.

For **HAPPY** walking follow the country code

Enjoy the countryside and respect its life and work

Keep all dogs under control

Keep to public paths across farmland

Fasten all gates

Guard against the risk of fire

Use gates and stiles to cross fences, hedges and walls

Leave livestock, crops and machinery alone

Help to keep all water clean

Take your litter home

Protect wildlife, plants and trees

Make no unnecessary noise

Take special care on country roads

Follow the waymarkers which indicate the route of the walk

Wear strong water-proof footwear



Bear left and follow the pavement through the village. Just before reaching Wolfenstan Arms, the main path goes right to wards some garages. A short detour to the left along Church Lane will bring you to St Matthew's Church (G).

At the end of the field, the path joins a wide track. Turn left, pass the ruins of Bramcote Hall (F) and cross over the motorway bridge. After about 100 metres, as the main track goes left around a small conifer plantation, go straight ahead through the gateway. Follow the track, initially with a hedge on your right. Follow the track as it swings left towards a copse. Just after the copse, go left through the hedge and follow the footpath along the field edge. About 100m after crossing a plank bridge over a ditch, follow the path to the right across the field. Cross over the lane and continue along the path as it crosses the middle of a field. When you reach a hedge, bear left to a track, which leads out onto Main Road opposite Shuttington Village Hall.

The walk starts in Abbey Green Park (A). Leave the car park and cross the footbridge (B) over the River Anker. Turn right and head diagonally across the grassed area towards Polesworth Abbey Church (C). Turn left before the Church and head along the drive under the archway (D) to the road. Turn left onto the High Street and, at the T junction, turn right into Station Road. On the corner stands the Nethersole Centre (E). Walk along Station Road, crossing the railway bridge, until you reach a road junction. Go straight across at the junction and up the track to Bramcote House. Take the rough track to the right of the cottage and continue to the right of the old pumping station. Cross over two stiles in quick succession and proceed along the side of the field, with Bramcote Brook on your left.

POLESWORTH WALK



This scenic circular walk links the historic village of Polesworth with the rural charm of Shuttington and Alvecote. In-between these settlements, the walk takes in a varied blend of countryside scenery and coal mining heritage



NORTH WARWICKSHIRE BOROUGH COUNCIL

COMMUNITY LEISURE

Points of interest

(A) Abbey Green Park

The Park was created after the land was open cast coal mined in the 1950's and early 1960's. Further information about the Park can be found on a board on the bowling green side of the pavilion.

(B) River Anker Footbridge

The footbridge was constructed in the 1950's, and replaced an old wooden bridge which originally lead to a corn mill run by the nuns of St Editha's Priory. The road bridge to the left was originally built in 1776

(C) Abbey Church of St Editha's

The church is all that remains of the Norman St Editha's Abbey. The original abbey was dismantled and the stone used to build Polesworth Hall. This was also demolished in the 19th Century, with some stone used to build the current vicarage.

(D) Abbey Gateway

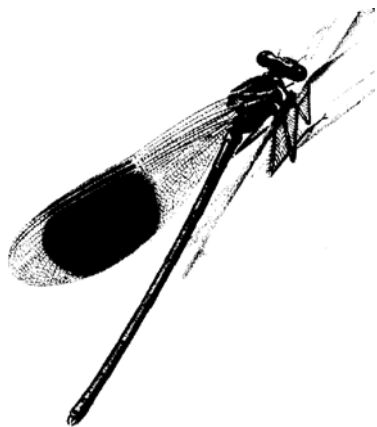
This late 14th Century gatehouse has a stone ground floor, a timber framed first floor and late 14th Century roof. The timber framed cottage adjacent to the arch is early 16th Century, and the row of black and white cottages has 17th Century framing.

(E) Nethersole Centre

This imposing building was erected in 1818 and was a school until 1973. The original school on this site was founded in 1638 by Sir Francis Nethersole and was run by nuns. A charitable trust set up by Sir Francis to fund the education of boys and girls still exists today.

(F) Bramcote Hall

This early 19th Century building was constructed around an original house built for Sir William Burdett, secretary to Elizabeth I.



The Banded Demoiselle (right) is frequently found flying along the River Anker during the summer months. It is metallic ultramarine in colour with a dark patch on the wing ends and is a good indicator of clean water.

(G) Shuttington

The village was first mentioned in the Domesday Survey. The churchyard contains the grave of an 18th Century record breaker, Thomas Spooner who was once the heaviest man in England, weighing 40 stone 9lbs (approximately 260 kg).

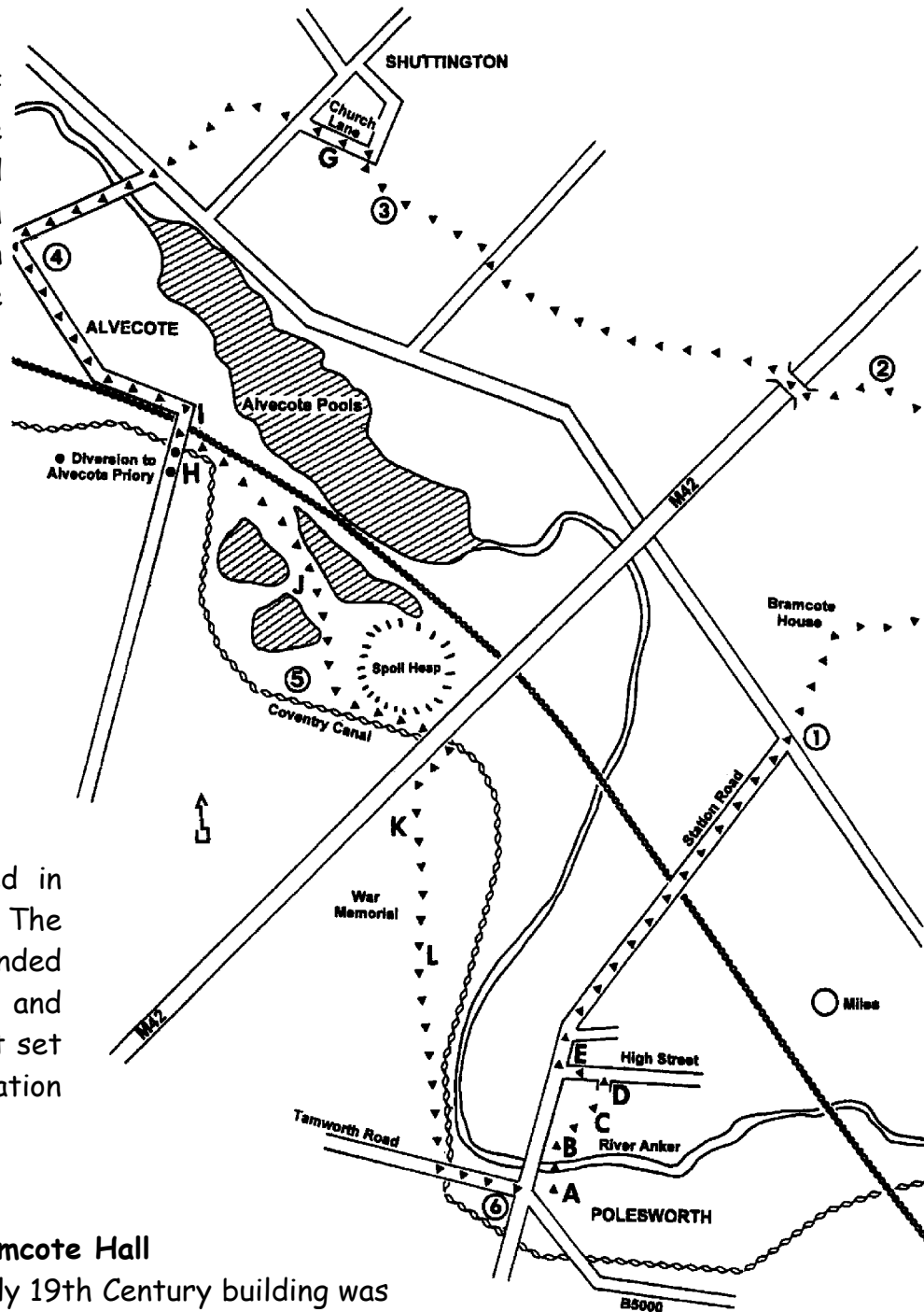
(H) Alvecote Priory and Dovecote

The original Priory was built in 1159. What remains today dates from the 14th Century, including a fine moulded doorway. The Dovecote is of a similar age, and would have been a source of meat for the monks.

(I) Coventry Canal and Railway

The canal was opened in 1790, 22 years after work commenced. It was constructed to carry horse-drawn narrow-boats of up to 72ft in length which were mainly used for taking coal to London. The railway was opened in 1847, only 2 years after Sir Robert Peel cut the first turf.

Steam was used until 1966. The line was electrified in 1970, and is the main line from London to the north-west and Glasgow.



The Fly Agaric can be found under the Silver Birch trees around the spoil heaps from Pooley Hall Colliery. It has a red/orange cap with white spots and is highly poisonous

(J) Alvecote Pools

Extensive coal mining in the area during World War Two has caused subsidence resulting in the large lakes visible on this walk.

The whole area is a nature reserve. Many of the lakes are said to hold 'monster' fish. They are also important for birdlife.

Look out for Herons along the banks of the River Anker and at Alvecote Pools



(K) Pooley Hall Colliery:

These buildings, now used as factory units, formed the main part of Pooley Hall Colliery. The first pit was sunk in 1848. It was the first colliery to be provided with miner's baths! The colliery closed in 1965.

(L) Pooley Hall:

The present building dates back to 1506, and was built by Sir Thomas Cockayne the Magnificent on the site of a Saxon hall. It is the only pre-1550 brick building in North Warwickshire.