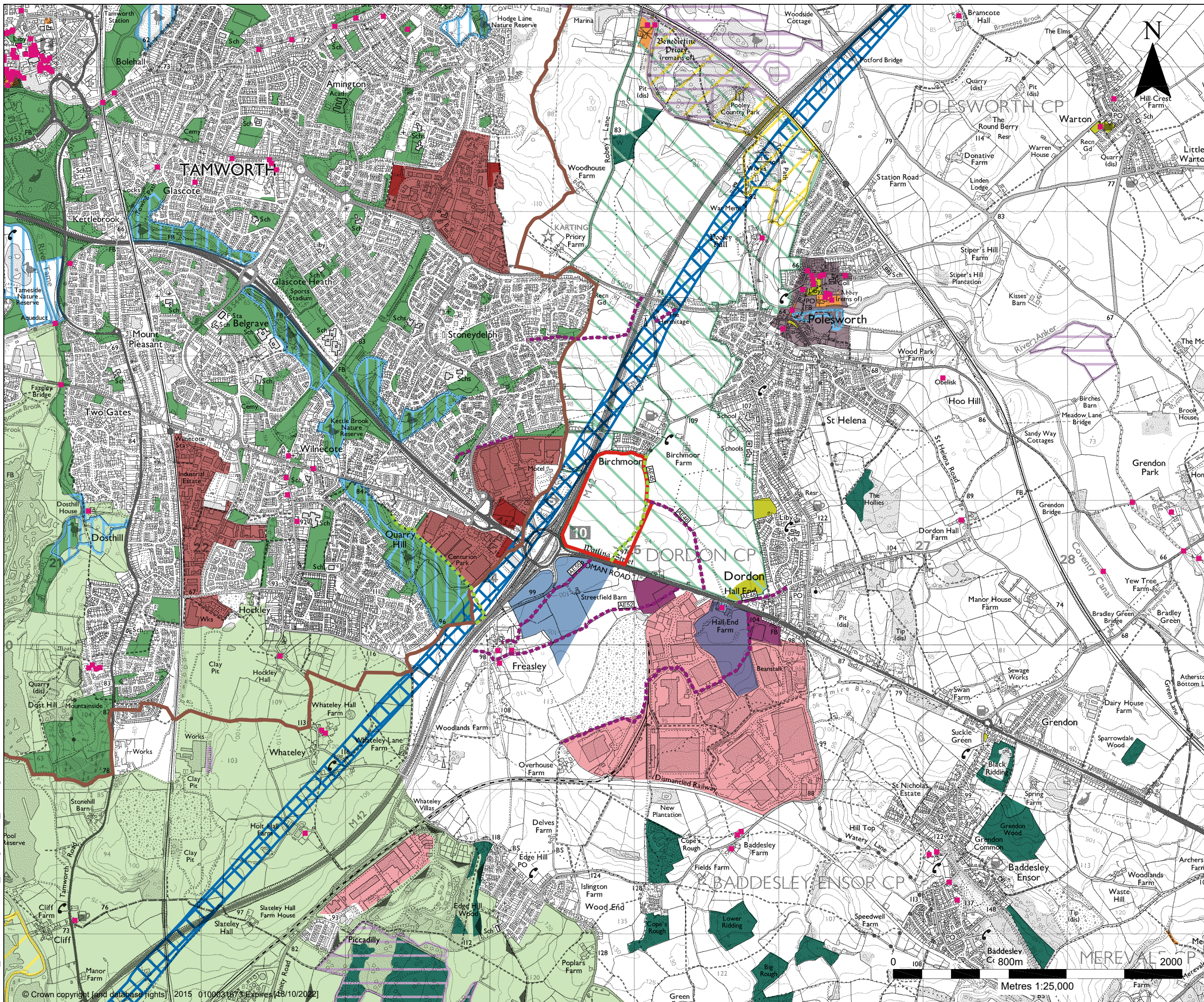


211018_403.11077.00001_Designations_EJ.dwg



LEGEND

- SITE BOUNDARY
- COUNTY BOUNDARY
- PUBLIC FOOTPATH (WITHIN 1KM OF THE SITE)
- PUBLIC BRIDLEWAY (WITHIN 1KM OF THE SITE)
- ANCIENT WOODLAND
- CONSERVATION AREA
- COUNTRY PARK
- GREEN BELT
- LISTED BUILDING
- LOCAL NATURE RESERVE
- SCHEDULED MONUMENT
- SITES OF SPECIAL SCIENTIFIC INTEREST

NORTH WARWICKSHIRE LOCAL PLAN (ADOPTED SEPTEMBER 2021)

- ALLOCATED EMPLOYMENT SITES
- EXISTING INDUSTRIAL ESTATES
- GREEN SPACES
- HS2 SAFEGUARDING AREA
- MEANINGFUL GAP - STRATEGIC GAP

STAFFORDSHIRE ADOPTED LOCAL PLAN (FEBRUARY 2016)

- OPEN SPACE
- STRATEGIC EMPLOYMENT AREAS
- EMPLOYMENT ALLOCATIONS

CONSENTED DEVELOPMENTS

- CONSENTED DEVELOPMENTS (PAP/2014/0648 AND PAP/2013/0269)

HODGETTS ESTATES

SLR global environmental solutions

2ND AND 3RD FLOORS,
15 MIDDLE PAVEMENT,
NOTTINGHAM, NG1 7DX
T: 01159 647280
www.slrconsulting.com

LAND AT JUNCTION 10, M42

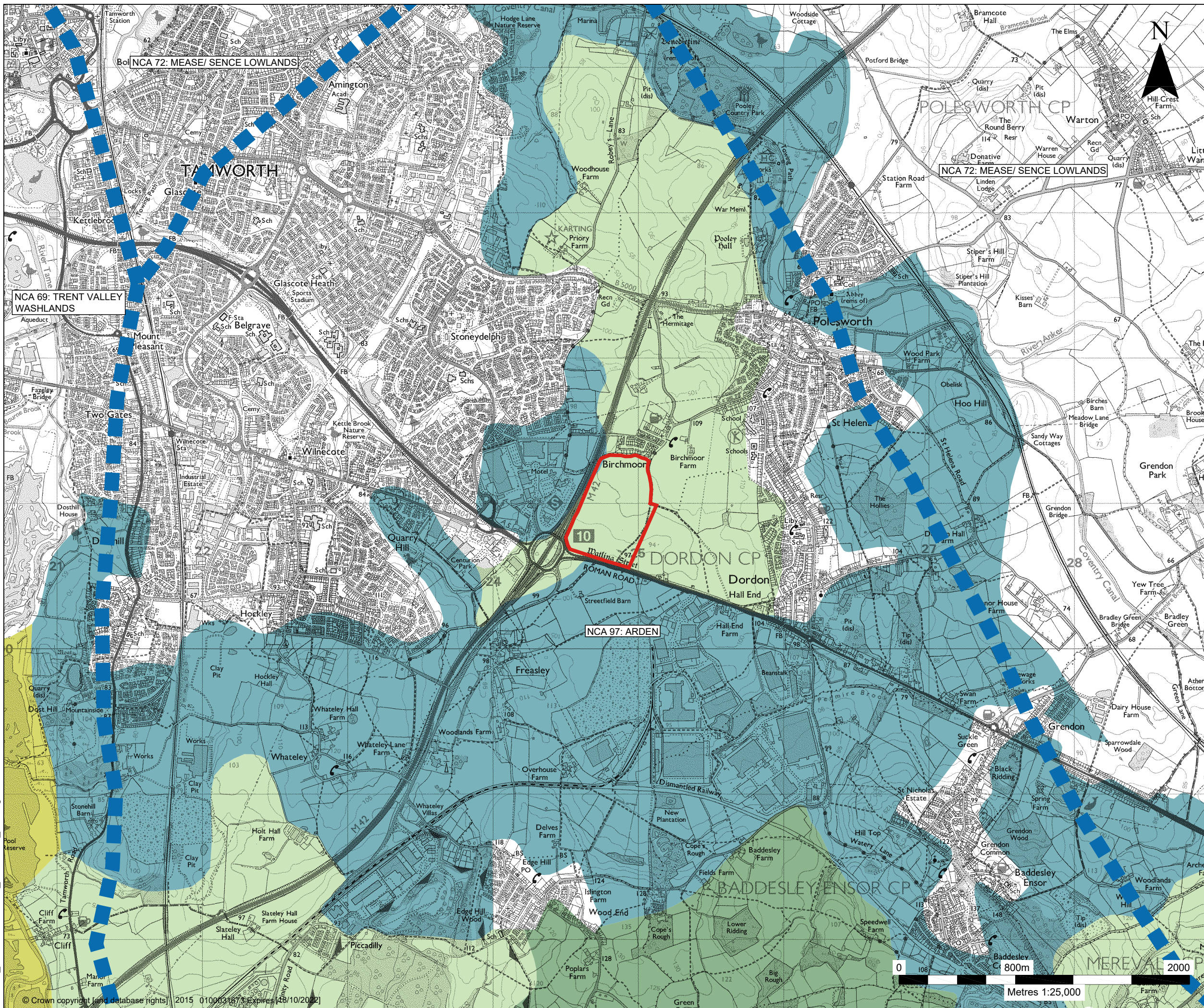
LANDSCAPE AND VISUAL APPRAISAL

DESIGNATIONS PLAN







LAJ-1

Scale: 1:25,000 @ A3 Date: NOV 2021

210104_403.11077.00001_Character_Ej.dwg



LEGEND

-  SITE BOUNDARY
-  NATIONAL CHARACTER AREA BOUNDARY
- WARWICKSHIRE LANDSCAPE GUIDELINES - ARDEN (NOVEMBER 1993)**
-  ANCIENT ARDEN
-  INDUSTRIAL ARDEN
-  RIVER VALLEY WETLANDS
-  WOODED ESTATE LANDS

NCA 72: MEASE/ SENCE LOWLANDS

NCA 69: TRENT VALLEY WASHLANDS

NCA 97: ARDEN

JUNCTION 10, M42

TAMWORTH

POLESWORTH CP

DORDON CP

BADDESLEY ENSOR CP

MEREVAL CP

HODGETTS ESTATES

SLR global environmental solutions

2ND AND 3RD FLOORS,
15 MIDDLE PAVEMENT,
NOTTINGHAM, NG1 7DX
T: 01159 647280
www.slrconsulting.com

LAND AT JUNCTION 10, M42

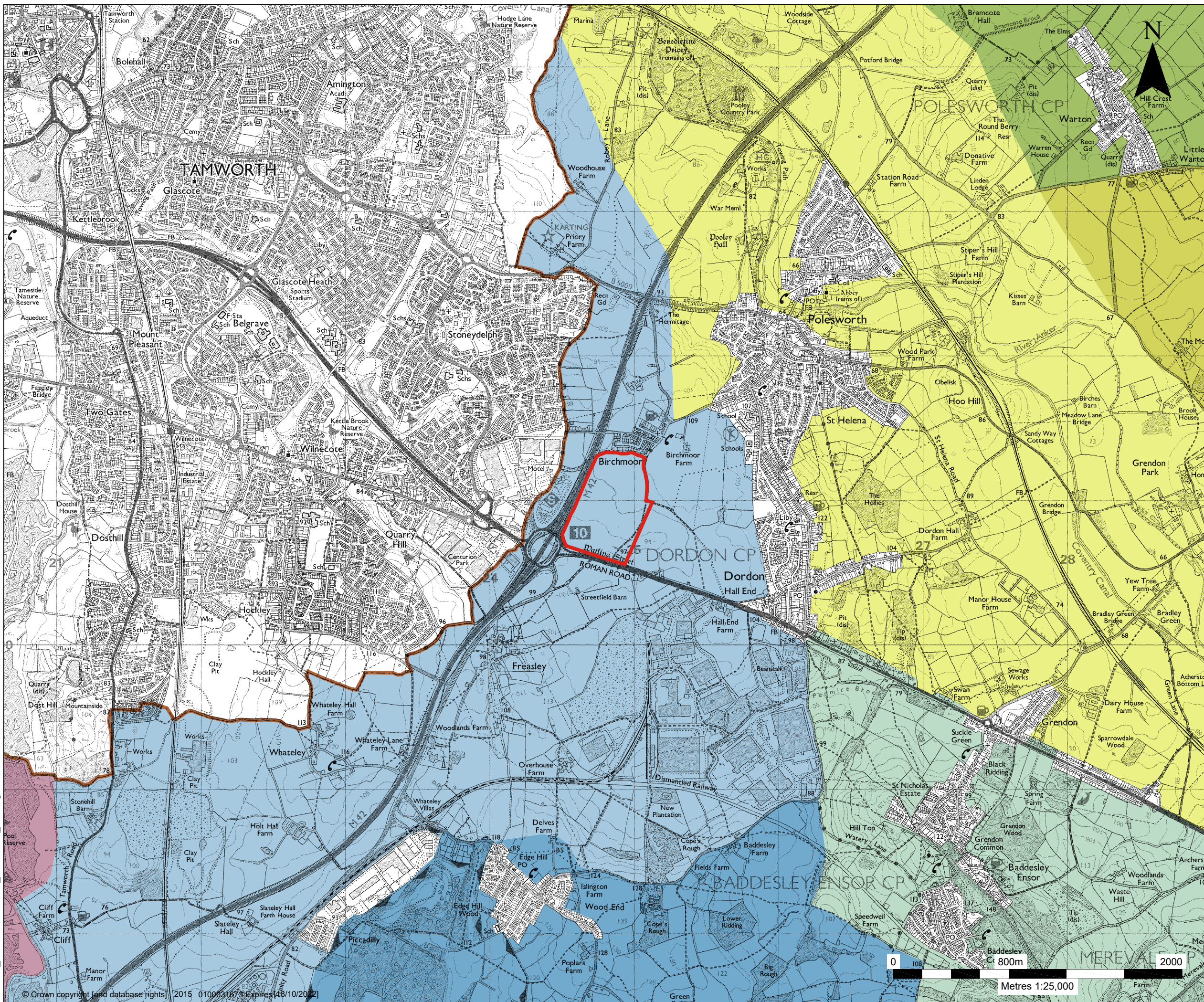
LANDSCAPE AND VISUAL APPRAISAL

LANDSCAPE CHARACTER PLAN

LAJ-2A

Scale: 1:25,000 @ A3 Date: NOV 2021

210104_403.11077.00001_Character_Ej.dwg



LEGEND

- SITE BOUNDARY
- COUNTY BOUNDARY

NORTH WARWICKSHIRE LANDSCAPE CHARACTER ASSESSMENT (AUGUST 2010)

- 1. NO MAN'S HEATH TO WARTON LOWLANDS
- 2. LITTLE WARTON TO FIELDS FARM- FEN LANES
- 3. ANKER VALLEY
- 4. BADDESLEY TO HARTSHILL UPLANDS
- 5. TAMWORTH FRINGE UPLANDS
- 6. WOOD END TO WHITACRE UPPER TAME VALLEY FARMLANDS
- 11. TAME VALLEY WETLANDS

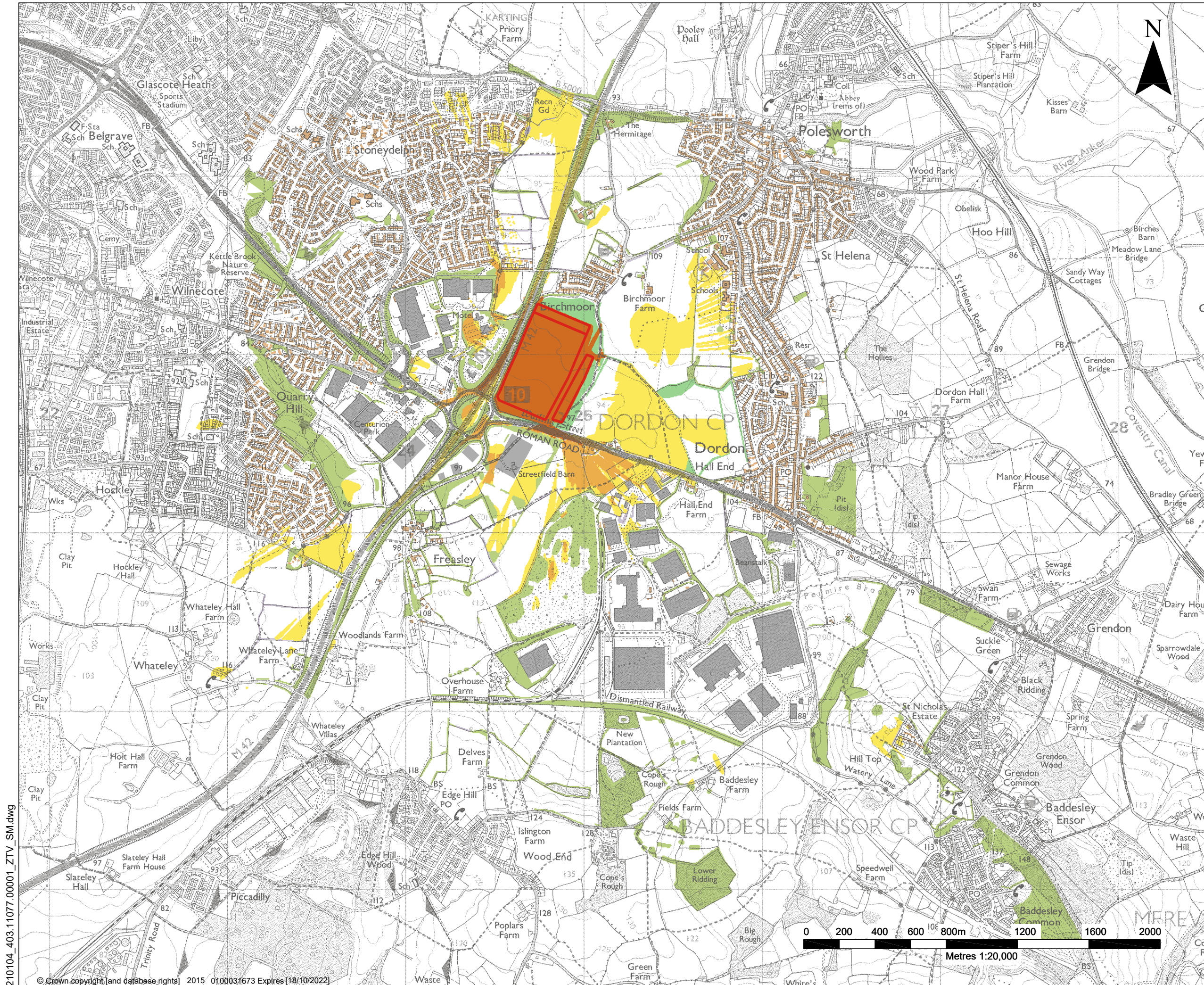
HODGETTS ESTATES

SLR global environmental solutions

2ND AND 3RD FLOORS,
15 MIDDLE PAVEMENT,
NOTTINGHAM, NG1 7DX
T: 01159 647280
www.slrconsulting.com

LAND AT JUNCTION 10, M42
LANDSCAPE AND VISUAL
APPRAISAL
LANDSCAPE CHARACTER PLAN
LAJ-2B

Scale: 1:25,000 @ A3 Date: NOV 2021



NOTES

- ZTV BASED ON OUTLINE AND MASSING FROM DRAWING 4263CA0000DRA0075P16 PARAMETERS PLAN (CHETWOODS ARCHITECTS) DATED 30/10/2020.
- THE ZTV INCLUDES LANDFORM MODELING AROUND BUILDINGS TAKEN FROM DRAWING 20073-BGL-XX-XX-SK-S-00200P3, PRELIMINARY PLATEAU LEVELS OPTION 1 - SINGLE PLATEAU (BURROWS GRAHAM) DATED 23/09/2020

- LEGEND**
- AREA ASSESSED FOR ZTV
 - GREATER THAN 3 DEGREES VISIBLE VERTICAL ANGLE
 - BETWEEN 1 AND 3 DEGREES VISIBLE VERTICAL ANGLE
 - BETWEEN 0.25 AND 1 DEGREES VISIBLE VERTICAL ANGLE

- AREAS OF ELEVATION WITHIN ZTV**
- EXISTING OS DATA INDUSTRIAL BUILDINGS AT 10M HIGH
 - EXISTING OS DATA RESIDENTIAL BUILDINGS AT 9M HIGH
 - EXISTING VEGETATION AT 12M HIGH
 - EXISTING HEDGEROWS AT 2M HIGH
 - PROPOSED VEGETATION AT 10M HIGH

HODGETTS ESTATES

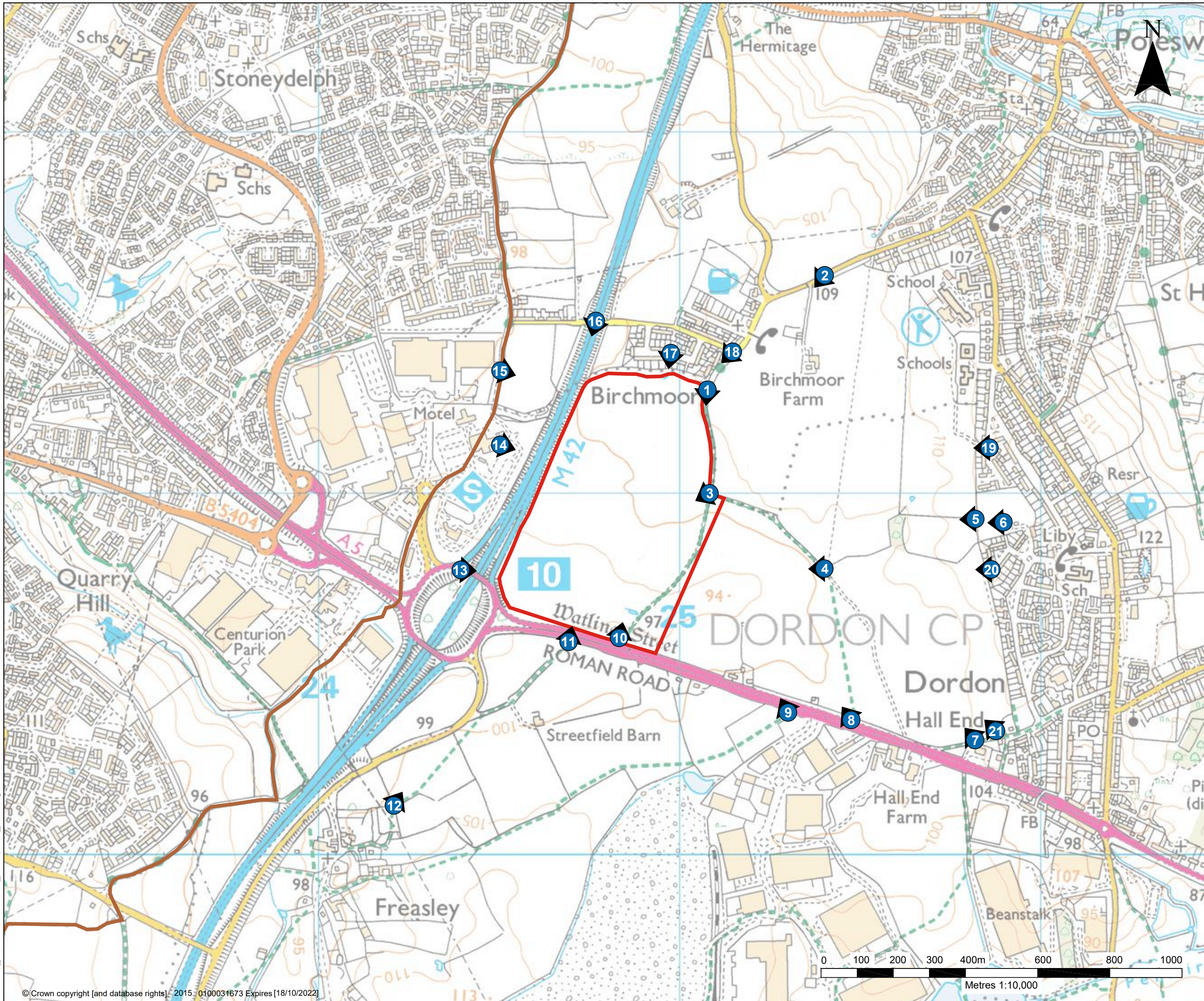
SLR global environmental solutions 2ND AND 3RD FLOORS, 15 MIDDLE PAVEMENT, NOTTINGHAM, NG1 7DX T: 01159 647280 www.slrconsulting.com

LAND AT JUNCTION 10, M42
 LANDSCAPE AND VISUAL APPRAISAL
 ZTV OF PROPOSED MASSING WITH ASSUMED LEVELS FROM OS WITH MITIGATION VEGETATION

LAJ-3
 Scale: 1:20,000 @ A3 Date: NOV 2021



210104_403.11077.00001_ZTV_SM.dwg



LEGEND

- SITE BOUNDARY
- COUNTY BOUNDARY
- 1 VIEWPOINT LOCATIONS

HODGETTS ESTATES

SLR

2ND AND 3RD FLOORS,
 15 MIDDLE PAVEMENT,
 NOTTINGHAM, NG1 7DX
 T: 01159 647280

 www.slrconsulting.com

global environmental solutions

LAND AT JUNCTION 10, M42
LANDSCAPE AND VISUAL APPRAISAL
VIEWPOINT LOCATION PLAN

LAJ-4

Scale 1:10,000 @ A3	Date NOV 2021
------------------------	------------------

210104_403.11077.00001_Viewpoint_TB.dwg